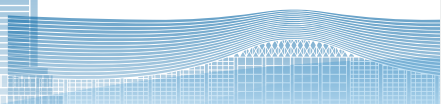
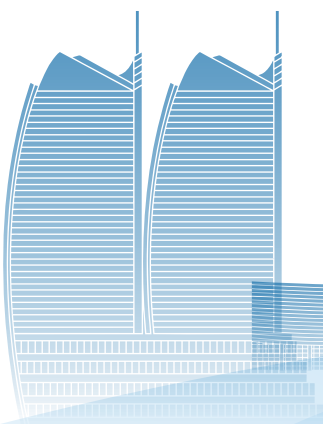
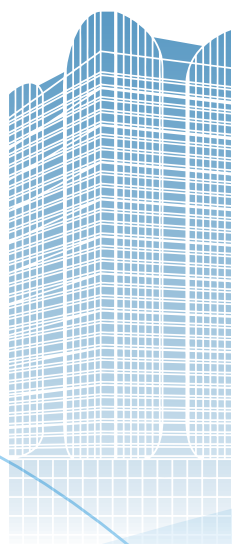


# 南充

INVESTMENT GUIDE  
投资指南



中国·南充  
NANCHONG.CHINA

# 成渝重镇 江畔明珠

MAJOR CITY IN CHENGDU-CHONGQING REGION JEWEL OF JIALING RIVER



南充位于四川盆地东北部、嘉陵江中游，幅员面积**1.25**万平方公里，总人口超**700**万人，是国家规划定位的成渝地区北部中心城市和四川省委、省政府培育的川东北省域经济副中心，2024年地区生产总值**2861.68**亿元，位居全省第五。

Nanchong is located in the northeastern Sichuan Basin and on the middle reaches of the Jialing River, covering an area of 12,500 square kilometers with a population of over 7 million. The city is the northern central city of the Chengdu-Chongqing region planned by the nation, a provincial economic sub-center cultivated by the Sichuan Provincial Committee and Provincial Government in groups. In 2024, Nanchong recorded a regional GDP of 286.168 billion yuan, ranking fifth in the province.

## 铁路 RAILWAY

达成铁路、兰渝铁路、巴南高铁、成达万高铁“四条铁路”境内交汇，中欧班列、中老班列货运畅达。

The Dacheng Railway, Lanzhou-Chongqing Railway, Banan High-Speed Railway, and Chengdu-Dazhou-Wanzhou High-Speed Railway converge here, supported by uninterrupted freight services of the China-Europe and China-Laos Railway Expresses.

## 公路 HIGHWAY

成渝、南渝等**16**条高速公路纵横交错。

Sixteen expressways, including the Chengdu-Chongqing and Nanning-Chongqing routes, form a tightly interconnected transportation network.

## 航空 AVIATION

高坪机场、阆中古城机场，是全省第四个双机场城市。

Gaoping Airport and Langzhong Ancient City Airport are the fourth dual-airport city in the province.

## 水运 WATER TRANSPORT

**5**个港区、**23**座码头，航道里程、船舶数量居全省**1**。

With 5 port areas and 23 docks, the mileage of waterways and the number of ships rank first in the province.

## 城市IP URBAN IP



国家外贸转型升级专业型示范基地  
National Specialized Demonstration Base for Foreign Trade Transformation and Upgrading



全国复合型现代流通战略支点城市  
A pivot city of national modern distribution strategy



全国创新驱动助力工程示范市  
A national innovation-driven project demonstration city



全国数字百强市  
One of the top 100 digital cities in China



国家区域医疗中心  
National regional medical center



国家知识产权试点市  
A national intellectual property pilot city



中国优秀旅游城市  
An outstanding tourism city in China



全国清洁能源示范城市  
A national clean energy demonstration city



# “1558”工作思路

WORK GUIDELINE

## 1 奋斗目标 GOAL OF STRUGGLE

加快建成省域经济副中心、奋力谱写现代化南充建设新篇章

Accelerate the construction of a provincial economic sub-center and strive to write a new chapter in the construction of modern Nanchong.

## 5 发展定位 DEVELOPMENT ORIENTATION

### 01 成渝地区先进制造业集聚区

An advanced manufacturing agglomeration area in Chengdu-Chongqing region

### 02 西部绿色发展样板区

A Green development model area in Western China

### 03 巴蜀特色文化旅游发展示范区

A Demonstration area for the development of cultural tourism with Ba-shu characteristics

### 04 四川东向北向开放引领区

A leading area of Sichuan's eastward and northward opening-up

### 05 全国有影响力的高品质生活宜居区

An influential high-quality livable area in the country

## 5 发展路径 DEVELOPMENT ORIENTATION

工业立市

Industrial City

文旅兴市

Cultural tourism city

绿色优市

Green market

开放活市

Open market

人才强市

Talent market

## 8 具体抓手 SPECIFIC GRIPPER

### 01 新型工业化攻坚突破行动

New industrialization breakthrough actions

### 02 农业特色优质发展行动

Agricultural characteristics high-quality development actions

### 03 文旅产业升级赋能行动

Cultural and tourism industry upgrading actions

### 04 商贸提质增效行动

Trade Quality-Efficiency Enhancement Action

### 05 营商环境优化争先行动

Business Environment Optimization Initiative

### 06 民生福祉持续增进行动

Continued efforts to improve people's well-being

### 07 重大风险防范化解攻坚行动

Actions to prevent and defuse major risks

### 08 干部队伍培优建强行动

Cadre team training and strengthening action



# 产业为本 工业当家

AN INDUSTRY-ORIENTED AND INDUSTRY-DOMINATED CITY

## 三大支柱性产业 THREE PILLAR INDUSTRIES

### 汽车汽配

Automobile & Auto Parts Industry

- 产业优势：南充是四川省支持打造的全国汽车汽配生产基地，拥有吉利、东嘉等整车、专用车生产企业5户，汽车零部件规上企业210户，具备年产10万台商用车产能，发动机、车身冲压件、车用空调、车轮、滤清器、冷却系统、制动器、复合材料等已实现本地化生产。

Industrial advantages: Nanchong is a national automotive and auto parts production hub designated by Sichuan Province, which has 5 complete/special-purpose vehicle manufacturers, such as Geely and Dongjia, and 210 above-designated-size auto parts enterprises. In addition, Nanchong has an annual production capacity of 100,000 commercial vehicles, with full localization production of core components including powertrains, body stampings, automotive HVAC systems, wheels, filters, cooling systems, braking components, and composite materials.



- 重点引进：新能源智能网联汽车、专用车，“三电”系统关键零部件、汽车后市场、自动驾驶、智能座舱、车联网

Focus on attracting: New energy intelligent connected vehicles, special vehicles, key components of the "three-electricity" system, the automotive aftermarket, autonomous driving, intelligent cockpits, and the Internet of Vehicles.

- 代表企业 Representative enterprises

吉利控股  
Geely Holding Group

人本轴承  
C&U Group

日上车轮  
Sunrise Wheel Group

博萨汽配  
Bosa Auto Parts

江龙汽车  
Jiangsu Jianglong  
Automotive Systems Co.

### 化工轻纺

Chemical Textile Industry



- 产业优势：南充是国家规划建设的石油天然气精细化工基地，四川省重点打造的西部重要化工中间品稳链保供基地和千亿级绿色化工产业基地。南充是中国绸都，丝绸、棉纺织、服装、鞋类、化纤等企业集聚，纺织服装产业经济总量居全省行业第一。

Industrial advantages: Nanchong is a fine chemical base for petroleum and natural gas planned and constructed by the state, a key base for stabilizing the supply chain of chemical intermediate products in the western region and a green chemical industry base worth hundreds of billions of yuan that Sichuan Province is focusing on building. Nanchong is known as the "Silk Capital of China". It is home to a concentration of enterprises specializing in silk, cotton textiles, clothing, footwear, and chemical fibers. The economic aggregate of the silk and garment industry ranks first among all industries in the province.

- 重点引进：工程塑料、可降解塑料、氨纶下游、涤纶长丝、涤纶短纤、生物化工产品、农用化学品
- Focus on attracting: Engineering plastics, biodegradable plastics, spandex downstream applications, polyester filament yarns, polyester staple fiber, Bio-based chemical products, agrochemicals.

- 代表企业 Representative enterprises

永荣控股  
Eversun Holding Group

四川能投  
Sichuan Energy Investment

埃夫科纳  
Afcena

联成化学  
UPC

禾本科技  
Heben Pesticide & Chemicals

富安娜家纺  
Fuanna Bedding and Furnishing

### 食品医药

Food & Pharmaceutical Industry

- 产业优势：南充食品产业体系完备，已形成粮油加工、肉制品加工、果蔬加工、调味品加工、酒饮生产5大产业集群。医卫资源总量居四川第2，中药材品种128个、中药材基地20余万亩。正依托北京安贞医院、市中心医院建设国家区域医疗中心，推动川北医学院附属医院创建高水平省医学中心。

Industrial advantages: Nanchong has a comprehensive food processing system with five major clusters, including grain and oil processing, meat product manufacturing, fruit and vegetable processing, condiment production, and beverage production (alcoholic and non-alcoholic). The healthcare resources of Nanchong rank second in Sichuan. There are 128 traditional Chinese medicinal materials and over 200,000 mu of Chinese medicinal materials cultivation bases. Relying on Beijing Anzhen Hospital and Nanchong Central Hospital, Nanchong is constructing a national regional medical center and promoting the establishment of a high-level provincial medical center at the Affiliated Hospital of North Sichuan Medical College.



- 重点引进：休闲食品、健康饮料、中成药、化学原料药、医药中间体、医疗器械

Focus on attracting: Snack foods, functional beverages, Chinese patent drugs, active pharmaceutical ingredients (APIs), pharmaceutical intermediates, medical devices.

- 代表企业 Representative enterprises

燕京啤酒  
Yanjing Beer

加加酱油  
Jiajia Soybean Sauce

张飞牛肉  
Zhang Fei Beef

保宁醋  
Baoning Vinegar

凸酒酒业  
Tujiu Winery

太极集团  
Taiji Group

康美制药  
Kangmei Pharmaceutical

康弘药业  
Kanghong Pharmaceutical

## 三大新赛道产业 THREE NEW TRACK INDUSTRIES

### 氢能

#### Hydrogen Energy Industry

- **产业优势:**南充是“成渝氢走廊”北线支点城市,享有能耗补贴、终端补贴、高速免费等方面政策支持,具备水陆交通、景区观光、港口物流,发电供热等氢能应用场景示范条件。

Industrial advantages: Nanchong is a pivotal node on the northern branch of the Chengdu-Chongqing Hydrogen Corridor, benefiting from policy incentives such as energy-consumption subsidies, end-user subsidies, and expressway toll exemptions. The city also has hydrogen demonstration infrastructure, including water-land transport networks, tourism transit systems, port logistics hubs, and power and heat generation facilities.

- **重点引进:**制氢、储氢、加氢装备,氢能装备、氢燃料电池

Focus on attracting: Hydrogen production systems, hydrogen storage vessels, hydrogen refueling stations, hydrogen processing units, fuel cell systems.

- **代表企业** Representative enterprises

亿华通  
SinoHytec

华科福赛  
Huake Fuelcell

中科氢能  
Zhongke Jiumi Hydrogen Energy

儒特集团  
ROOT



### 低空经济

#### Low-altitude Economic Industry



- **产业优势:**南充拥有高坪机场、阆中古城机场两个4C级民用机场,年旅客吞吐量达100万人次,年货邮吞吐量达2177.95吨、年起降1.5万架次,南部、营山、西充三县通用机场建设项目纳入全省规划。

Industrial advantages: Nanchong has two Class 4C civil airports, namely Nanchong Gaoping Airport and Langzhong Ancient City Airport. The annual passenger throughput reaches 1 million, the annual cargo and mail throughput is 2,177.95 tonnes, and the aircraft movements are 15,000 sorties. The construction projects of general aviation airports in Nanbu, Yingshan and Xichong counties have been incorporated into the provincial infrastructure planning.

- **重点引进:**研发设计、原材料制造、低空飞行器、地面设备和运维服务

Focus on attracting: R&D design, raw material production, low-altitude air vehicles, ground support equipment and maintenance, repair & overhaul (MRO).

- **代表企业** Representative enterprises

中科宇航  
Cas Space

元科智能  
Yuanke Intelligent Technology

星展测控  
Satpro

沃洛佳科技  
Woluoja

### 人工智能

#### Food & Pharmaceutical Industry

- **产业优势:**南充是四川省人工智能创新发展试验区,拥有川东北大数据云计算中心、“5G+”智算中心等智算平台,具备人工智能大模型计算能力。

Industrial advantages: Nanchong is a pilot zone for the innovative development of artificial intelligence in Sichuan Province. It is equipped with intelligent computing platforms such as the North Sichuan Data Cloud Computing Center in Eastern Sichuan and the “5G+” Intelligent Computing Center, and has the computing capabilities for large artificial intelligence models.

- **重点引进:**算力芯片、大模型、人形机器人、智能终端

Focus on attracting: AI chips, foundation models, humanoid robots, and intelligent terminals.

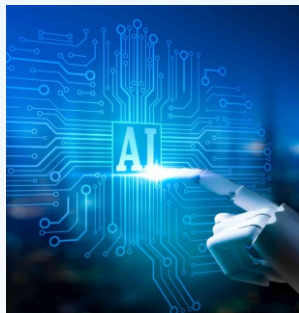
- **代表企业** Representative enterprises

智谱华章  
Knowledge Atlas

优必选  
Ubtech

德尔博睿  
D&E

鸿歌网络  
Honksoft

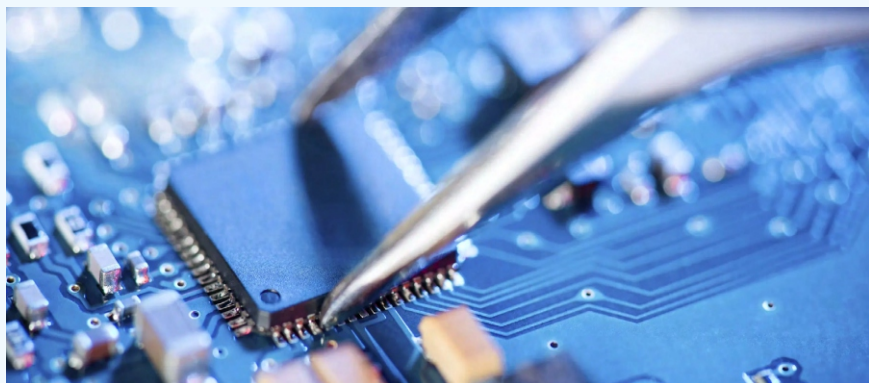




## 两大成长性产业 TWO MAJOR GROWTH INDUSTRIES

### 电子信息

#### ELECTRONIC INFORMATION INDUSTRY



- **产业优势:**南充背靠万亿级成渝国家级电子信息先进制造业集群,已初步形成新型电子元器件及设备制造、软件和信息服务业竞相发展的格局。

Industrial advantages: Backed by the trillion-yuan-level national advanced manufacturing cluster of electronic information in the Chengdu-Chongqing region, Nanchong has initially formed a pattern where the manufacturing of new electronic components and equipment, as well as software and information services, are developing in competition.

- **重点引进:**电子元器件、新型显示、半导体零部件、集成电路

Focus on attracting: Electronic components, advanced display technologies, semiconductor components, integrated circuits.

- **代表企业** Representative enterprises

三环电子  
Sanhuan Electronics

弘信电子  
Honflex

惠科股份  
HKC

熙泰科技  
Sidtek

香港电阻  
Hong Kong Resistors

合科泰半导体  
Hottech Group

### 高端装备制造

#### ELECTRONIC INFORMATION INDUSTRY



- **产业优势:**南充高新区先进制造产业园初具规模,真空设备入选四川省新型工业母机产业新赛道,已形成真空产品、现代农机、石油化工专用设备、高端数控机床、警用农用无人机等高端装备制造制造业集聚发展格局。

Industrial advantages: The Advanced Manufacturing Industrial Park in Nanchong High-tech Zone has achieved significant scale development, with its vacuum equipment listed in Sichuan Province's new strategic sector of industrial machine tools. The park now establishes an integrated cluster for high-end equipment manufacturing, covering vacuum processing systems, modern agricultural machinery, dedicated petrochemical equipment, high-end CNC machine tools, and police and agricultural unmanned aerial vehicles.

- **重点引进:**真空装备、专用特种设备、智能制造装备、航空航天装备

Focus on attracting: Vacuum processing equipment, specialized equipment, smart manufacturing systems, aeronautics and space systems.

- **代表企业** Representative enterprises

九天真空  
CBVAC

中科九微  
Multi-Micro Technology

首创科技  
Pioneering technology

中景航天  
Zhongjing Aerospace Technology

景恒科技  
Jingheng Technology

## 现代农业

### Modern Agricultural Industry

- **产业优势:**南充是国家优质商品粮供给基地、优质商品猪战略保障基地,粮食播种面积、生猪出栏量均居全省第一,农林牧渔业总产值连续16年保持全省第二。

Industrial advantages: Nanchong is a national base for high-quality commercial grain supply and a strategic guarantee base for high-quality commercial pigs. Its sown area of grain and the number of pigs sold both rank first in the province. The total output value of agriculture, forestry, animal husbandry and fishery has remained the second largest in the province for 16 consecutive years.



- **重点引进:**粮油、肉制品精深加工,智能农机、现代农机制造,农资供应、技术推广、储存运销服务

Focus on attracting: Deep processing of grain, oil and meat products, intelligent agricultural machinery and modern agricultural machinery manufacturing, supply of agricultural materials, technology promotion, storage, transportation and marketing services.

## 文化旅游

### Cultural Tourism Industry



- **产业优势:**四川省委明确支持南充建设国际旅游城市,拥有3个天府旅游名县、2个5A级景区、10个4A级景区、49项国家级非物质文化遗产,南充川北大木偶、南充皮影享誉中外。

Industrial advantages: The Sichuan Provincial Committee of the Communist Party of China has explicitly supported, Nanchong boasting 3 famous tourism counties in Tianfu, 2 5A-level scenic spots, 10 4A-level scenic spots, and 49 national and provincial intangible cultural heritages. Nanchong's Northern Sichuan Puppet and Nanchong shadow puppetry are renowned both at home and abroad.

- **重点引进:**非遗文创、实景演艺、休闲度假、户外运动、生态康养、研学体验

Focus on attracting: Heritage-based cultural industries, immersive live performances, leisure vacations, outdoor sports, ecological health care, and education tourism Programs.

## 金融商贸

### Financial And Commercial Trade Industry

- **产业优势:**南充拥有川东北地区规模最大的国际会展中心、金融中心,各类金融单位148家,辐射带动周边地区3700万人口。

Industrial advantages: Nanchong boasts the largest international convention and exhibition center as well as a financial center in northeastern Sichuan Province. It has 148 diversified financial institutions, serving 37 million people in the surrounding areas.



- **重点引进:**总部经济、会展博览、保险金融、投行服务

Focus on attracting: Corporate headquarters economy, exhibition and convention, insurance and financial services, investment banking services.

## 现代物流

### Modern Logistics Industry



- **产业优势:**南充拥有南充现代物流园、川东北地区唯一的保税物流中心(B型)、跨境电商综合试验区等开放平台,具备多式联运、共同配送、进出口物流、供应链服务等功能。

Industrial advantages: Nanchong boasts open platforms such as the Nanchong Modern Logistics Park, the only bonded logistics center (Type B) in northeastern Sichuan, and the Cross-border E-commerce Comprehensive Pilot Zone. It also possesses functions including multimodal transport, joint distribution, import and export logistics, and supply chain services.

- **重点引进:**冷链物流、应急物流、保税物流、物流装备、跨境电子商务

Focus on attracting: Temperature-Controlled cold chain logistics, emergency response logistics, bonded logistics, logistics equipment, cross-border e-commerce.

南充临江新区

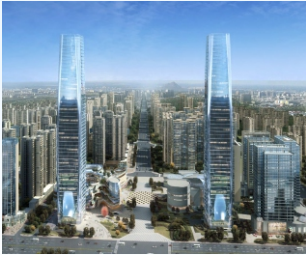
Linjiang New Area Nanchong

- 连续3年入围全国城市新区“五新”潜力30强，是四川省4个省级新区之一，享有省委、省政府专项支持政策。

It has been listed among the top 30 "Five New" potential new urban districts in China for three consecutive years and is one of the four provincial-level new districts in Sichuan Province, enjoying special support policies from the provincial committee and the provincial government.

- 重点发展：汽车汽配、电子信息、高端装备制造

Key development: Automobile and auto parts, electronic information, high-end equipment manufacturing



南充经济开发区

Nanchong Economic Development Zone



- 南充经济开发区铁路专用线、化工专用码头、消防特勤站、危废处置中心等十大公辅工程齐全完备，化学需氧量、氨氮、二氧化硫、氮氧化物等可使用水环境及大气环境指标容量充足。

The Nanchong Economic Development Zone is well-equipped with ten major public auxiliary projects, including the dedicated railway line, the dedicated chemical wharf, the special fire service station, and the hazardous waste disposal center. The capacity of water environment and atmospheric environment indicators such as chemical oxygen demand, ammonia nitrogen, sulfur dioxide, and nitrogen oxides is sufficient.

- 重点发展：油气化工、化工新材料、精细化工、化纤纺织

Key development: Oil and gas chemical industry, advanced chemical materials, fine chemical industry, Man-made fiber textile

南充高新技术产业园区

Nanchong High-tech Industrial Park

- 位于南充临江新区核心区，是国家级绿色工业园区、全省十大产业园区、全省近零碳排放试点园区。

Located in the core area of Linjiang New District, Nanchong, it is a national-level green industrial park, one of the top ten industrial parks in the province, and a pilot park for near-zero carbon emissions in the province.

- 重点发展：高端装备制造、新材料、食品医药、低空经济、氢能、人工智能

Key development: High-end equipment manufacturing, new materials, food and pharmacy industry, low-altitude economy, hydrogen energy, artificial intelligence



南充现代物流园区

Nanchong  
Modern Logistics Park



重点发展：保税物流、应急物流、装备物流、电商物流、多式联运

Key development: Bonded logistics, emergency logistics, equipment logistics, e-commerce logistics, multimodal transport

南充国家现代农业示范区

Nanchong National Modern  
Agriculture Demonstration Zone



重点发展：农业种养殖、农产品精深加工、农业科技研发、生态农业休闲观光

Key development: Agricultural crop and livestock production, intensive and deep processing of agricultural products, agricultural science and technology research and development, ecological agricultural leisure and tourism



## 四川南充航空港经济开发区

Sichuan Nanchong Airport  
Economic Development Zone



**重点发展：**电子信息、高端装备制造、人工智能、低空经济、丝纺服装

Key development: Electronic information, high-end equipment manufacturing, artificial intelligence, low-altitude economy, silk textile and garment

## 嘉陵工业集中区

Jialing Industrial  
Concentration Zone



**重点发展：**汽车汽配、食品饮料、电子信息、装备制造、家居建材

Key development: Automobile and auto parts, food and beverages, electronic information, equipment manufacturing, home building materials

## 南充嘉陵新能源汽车特色小镇

Nanchong Jialing New Energy  
Vehicle Characteristic Town



**重点发展：**新能源汽车研发制造、零部件生产、汽车展销

Key development: Research and development and manufacturing of new energy vehicles, production of components, and auto exhibitions and sales

## 四川阆中经济开发区

Sichuan Langzhong Economic  
Development Zone



**重点发展：**食品医药、汽摩汽配、碳基新材料、清洁能源

Key development: Food and medicine, auto and motorcycle parts, carbon-based new materials, clean energy

## 四川南部经济开发区

Sichuan Nanbu Economic  
Development Zone



**重点发展：**机械制造、电子信息、新型铝材、食品医药、低空经济

Key development: Mechanical manufacturing, electronic information, new aluminum materials, food and medicine, low-altitude economy

## 四川西充经济开发区

Sichuan Xichong Economic  
Development Zone



**重点发展：**真空、生物医药、氢能、低空经济

Key development: Vacuum, biopharmaceutical industry, hydrogen energy, low-altitude economy

## 川东北有机农产品精深加工产业园

Northeast Sichuan Organic Agricultural  
Products Deep Processing Industrial Park



**重点发展：**休闲食品、预制菜、农产品精深加工

Key development: Snack foods, prefabricated dishes, intensive and deep processing of agricultural products

## 四川仪陇经济开发区

Sichuan Yilong Economic  
Development Zone



**重点发展：**机械制造、新能源、新材料、低空经济、人工智能

Key development: Mechanical manufacturing, new energy, new materials, low-altitude economy, artificial intelligence

## 四川营山经济开发区

Sichuan Yingshan Economic  
Development Zone



**重点发展：**机械汽配、电子信息

Key development: Mechanical auto parts, electronic information

## 四川蓬安工业园区

Sichuan Peng'an  
Industrial Park



**重点发展：**机械汽配、农产品加工、电子信息

Key development: Mechanical auto parts, agricultural product processing, electronic information

# 一流环境 兴业沃土

FIRST-CLASS ENVIRONMENT AND FERTILE SOIL

## 政策支持 POLICY SUPPORT



出台制造业高质量发展**19**条、商贸服务业高质量发展**18**条、农产品加工业延链补链强链**8**条、小微企业上规提质**26**条、氢能产业发展**9**条、低空经济产业发展**8**条、人工智能产业发展**8**条等系列政策，支持产业加快发展。

A series of policies have been introduced, including 19 measures for high-quality development of the manufacturing industry, 18 for high-quality development of the trade and service industry, 8 for extending, supplementing and strengthening the industrial chain of agricultural products processing, 26 for upgrading and improving the quality of small and micro enterprises, 9 for the development of the hydrogen energy industry, 8 for the development of low-altitude economy industries, and 8 for the development of artificial intelligence industries, to support the accelerated development of these industries.

## 人才保障 TALENT GUARANTEE

南充拥有高等院校**10**所、国家级孵化器**1**个、省市级院士专家工作站**11**个、省部级重点实验室**3**个、科技活动机构**161**个，各类专业技术人员**12**万人，科技成果孵化水平区域领先。

Nanchong has 10 universities and colleges, 1 national incubator, 11 provincial and municipal expert workstations, 3 provincial and ministerial-level key laboratories, 161 science and technology activity institutions, and 120 thousand various professional technicians. The level of Nanchong's scientific and technological achievement incubation is leading in the region.



## 生活配套 LIVING FACILITIES



南充是全省教育大市、医卫大市、消费大市，有各类学校**1316**所、医疗卫生机构**5255**个，以及王府井、保利、万达、环形中心等大型商业综合体**33**个。

Nanchong is a major provincial hub for education, healthcare, and consumer markets, boasting 1,316 educational institutions, 5,255 healthcare facilities, and 33 large-scale commercial complexes including Wangfujing, Poly, Wanda Plaza, and Circle Center.



## 要素成本 FACTOR COST

### 工业用水 INDUSTRIAL WATER

价格	备注
低至 2.85 元/吨	含污水处理费

### 企业用电 ENTERPRISE ELECTRICITY CONSUMPTION

用电时段	峰值	电价(元)	备注
23:00至次日7:00	低谷	0.26-0.35	全市工业用电到户均价0.644元/千瓦时，国网四川电网工商业目录销售电价全面取消，工商业用户全部进入电力市场，按照市场价格购电，未直接从电力市场购电的由电网企业代购电，特别重大的产业项目采用光伏储备等方式，综合电价低至0.45元。
7:00-10:00	平峰	0.62-0.82	
12:00-15:00			
21:00-23:00			
10:00-12:00	高峰	0.97-1.30	
15:00-21:00			

### 工业用气 INDUSTRIAL GAS

价格	备注
低至 2.27 元/立方米	四川省非居民用气销售价格已放开，具体销售价格由相关燃气经营企业适时调整

### 工业用地 INDUSTRIAL LAND PRICE

区域	挂牌出让价	区域	挂牌出让价
顺庆区	9.6 万元/亩	南部县	5.6 万元/亩
高坪区	9.6 万元/亩	西充县	5.6 万元/亩
嘉陵区	8-17 万元/亩	仪陇县	8.4 万元/亩
南充经开区	8-12 万元/亩	营山县	5.6 万元/亩
阆中市	6.4 万元/亩	蓬安县	6.3 万元/亩
备注:交付土地完成“七通一平”			

### 航空运输 AIR TRANSPORTATION

重量	价格	重量	价格
45kg以下	6-15元/公斤	100kg-300kg	2-7元/公斤
45-100kg	4-9元/公斤	300kg以上	1.8-6.5元/公斤
备注:最低运价210元/票,实际价格以航空运输公司公布为准。			

### 公路运输 ROAD TRANSPORTATION

0.40 元～ 0.50 元/吨·公里

### 水路运输 WATERWAY TRANSPORTATION

0.15 元～ 0.30 元/吨·公里

### 出境铁路运输 OUTBOUND RAILWAY TRANSPORTATION

地点	价格
南充-霍尔果斯-俄罗斯	3000—5400 美元/TEU

### 企业用工 ENTERPRISE EMPLOYMENT

普通工人	技术人员	管理人员	文 员
3000-4000 元 / 月	4000-6000 元 / 月	5000-8000 元 / 月	2500-3500 元 / 月
备注:全市月最低工资标准2200元			



# 投资南充 合作共赢

INVESTMENT IN SOUTH CHINA LEADS TO WIN-WIN COOPERATION

南充市经济合作和外事局主要牵头全市投资促进、博览会展、外事、港澳事务等相关工作，以宣传推介南充投资环境、联系服务国内外企业来南考察、促进产业项目洽谈合作、协调解决在南投资企业困难为己任，是投资者来南考察、洽谈、投资的“第一站”。

Nanchong Economic Cooperation and Foreign Affairs Bureau mainly takes charge of investment promotion, conventions and exhibitions, foreign affairs, Hong Kong and Macao affairs and other related work. Meanwhile, it is responsible for promoting Nanchong's investment environment, contacting domestic and foreign enterprises to visit Nanchong and serving them during their visits, facilitating the negotiation and cooperation of industrial projects, and coordinating and addressing the difficulties encountered by enterprises that have invested in Nanchong. Consequently, it is the "first stop" for investors to visit, negotiate and invest in Nanchong.

市投资促进服务中心：18280829397

Nanchong Investment Promotion Service Center

市政府驻浙江办事处：15808173198

The Office of Nanchong Municipal People's Government in Zhejiang

化工轻纺产业招商专班：18582261681

Chemical textile industry investment group

电子信息产业招商专班：16683330567

Electronic information industry investment group

低空经济产业招商专班：13596232563

Low-altitude economic industry investment group

人工智能产业招商专班：16659690570

Artificial intelligence industry investment group

现代服务业招商专班：19960839999

Modern service industry investment group

市政府驻广东办事处：13228266838

The Office of Nanchong Municipal People's Government in Guangdong

汽车汽配产业招商专班：18280826845

Auto parts industry investment group

食品医药产业招商专班：15882659926

Food and pharmaceutical industry investment group

高端装备制造产业招商专班：18582261188

High-end equipment manufacturing industry investment group

氢能产业招商专班：16683322968

Hydrogen energy industry investment group



官方网站



投资南充微信号