

内江

投资指南 NEIJANG INVESTMENT GUIDE

成渝之心 | 大千故里 | 甜蜜之城 |



中国 · 内江
Neijiang · China

内江

这里是
Neijiang

【美乡优城】【共同富裕】
【做大工业】【做强物流】

成渝半小时经济圈

Chengdu-Chongqing Half-Hour Economic Circle

中国投资热点城市

China Investment Hotspot City

2024投资环境质量十佳城市

2024 Top 10 City of Investment Environment

中国甜食之都

Chinese Sweet Food City



建设成渝发展主轴产业强市和区域物流枢纽 打造四川新质生产力重要发展极

To Develop Neijiang as a City with Strong Industries and a Regional Logistics Hub
along the Chengdu and Chongqing Development Axis
To Develop Neijiang as an Important Development Pole of Sichuan's New Quality Productive Forces

中国西部钒钛资源综合利用基地
Comprehensive Utilization Base of Vanadium
and Titanium Resources in Western China

国家级页岩气示范区
National Shale Gas Demonstration Area

中国汽车（摩托车）零部件制造基地
Chinese Automobile (Motorcycle) Parts
Manufacturing Base

国家新型工业化产业示范基地
National Demonstration Base of New
Industrialization Industry



01

City Introduction



幅员面积

5305

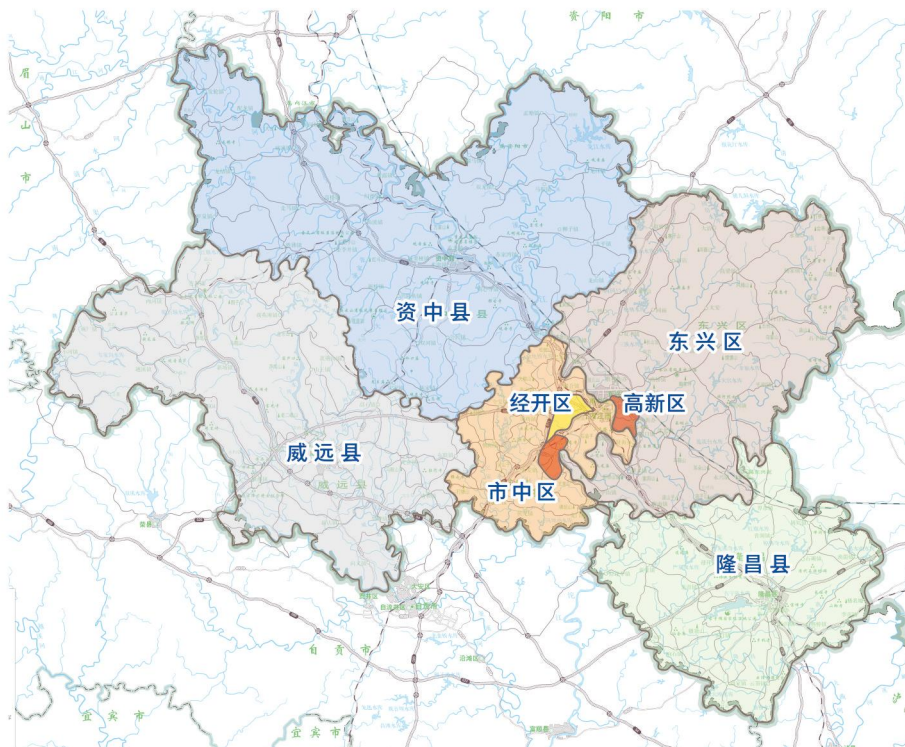
Covering an area of 5385 km²

人口

400万

Population of 4 million





地处四川盆地东南部，沱江下游中段；下辖5个县(市、区)，拥有1个国家级经开区、1个国家高新区、1个国家农业科技园。东汉筑城设县，已有2000多年历史，素有“成渝之心、大千故里、甜蜜之城”的美誉。

It is located in the southeast of Sichuan Basin, in the middle of the lower reaches of the Tuojiang River. , it has jurisdiction over five counties(cities, districts), one National Economic and Technological Development Zone, one National High-tech Industrial Development Zone and one National Agricultural Science and Technology Park. With a history of more than 2000 years, it was built in East Han Dynasty as a county. It is known as *the Midway of Chengdu and Chongqing, Hometown of Mr. Chang Dai-chien and City of Sweetness*.



中国投资热点城市
China Investment Hotspot City



中国甜食之都
Chinese Sweet Food City



中国黑猪之乡
Chinese Black Pig Town



中国天冬之乡
Chinese Cochinchinensis Town



中国血橙之乡
Chinese Blood Orange Town



中国无花果之乡
Chinese Fig Town



中国鲢鱼之乡
Chinese Catfish Town



中国白乌鱼之乡
Chinese White Mullet Town



中国西部鱼米之乡
The Fertile Land Of Fish And Rice In Western China

02 资源丰富 Rich Resources

水资源 Water Resources

主城区自来水供应20万吨/日，污水处理38.6万吨/日（中心城区17.9万吨/日）。

The water supply in the main urban area is 200,000 tons/day, and the sewage treatment is 386,000 tons/day (179,000 tons/day in the central urban area).



电力资源 Power Resources

发电机装机总容量528.54万千伏安，能保证全年365天不拉闸限电。

The total installed capacity of the generator is 5.2854 million KVA, which can guarantee the power without blackouts throughout the year.



燃气资源 Gas Resources

页岩气储量超过2.2万亿方，市域内页岩气探明储量5477亿方，天然气年供气量8172万方。

The shale gas reserves exceed 2.2 trillion m³, the proven shale gas reserves in the city are 547.7 billion m³, and the annual natural gas supply is 81.72 million m³.



矿产资源 Mineral Resources

拥有煤、油页岩、石油、天然气等24种矿产资源。炼焦煤保有储量7500万吨，石灰岩储量超1亿吨；石英砂岩储量超7500万吨；钒钛磁铁矿储量超1.4亿吨。

It has 24 kinds of mineral resources such as coal, oil shale, oil and natural gas. The reserve of coking coal is 75 million tons, and the reserve of limestone is more than 100 million tons; the reserves of quartz sandstone exceed 75 million tons; vanadium-titanium magnetite reserves exceed 140 million tons.





03 枢纽内江 Transportation Hub

国家区域性综合交通枢纽、西部陆海新通道门户枢纽，拥有“11条铁路+15条高速公路+5座机场”，已实现县县通高铁，素有“川南咽喉”“巴蜀要塞”之称。

As the national regional comprehensive transportation hub and the gateway hub of the new land and sea channel in the west, with "11 railways+15 expressways+5 airports" and with access to high-speed train in each county, Neijiang is known as *the Throat of Southern Sichuan and the Fortress of Sichuan and Chongqing*.



00 合作方向 Main Cooperation Area



页岩气+ Shale Gas +



招引方向 | Orientation

重点围绕页岩气勘探开发、天然气基础大化工、精细化工、氢能等方向招引产业链上下游项目。

Focusing on upstream and downstream projects in the industrial chain of shale gas exploration and development, natural gas basic chemical industry, fine chemical industry, hydrogen energy, etc.



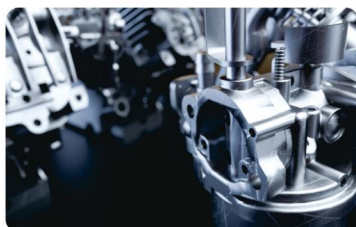
钒钛+ Vanadium and Titanium +



招引方向 | Orientation

重点围绕钒钛产业上下游产业链招引项目，包括先进金属材料、钒液流储能电池及其核心零部件等。

Focusing on the upstream and downstream industrial chain of vanadium and titanium industry, including advanced metal materials, vanadium liquid flow energy storage battery and its core components.





甜味+ Sweet Taste +



招引方向 | Orientation

重点围绕甜味休闲食品、酒水饮料、预制菜、复合调味品等方向招引项目。

Focusing on snack food, beverage, pre-made dishes, compound condiments etc.



装备+ Equipment +



招引方向 | Orientation

重点围绕汽车及关键零部件、智能装备、轨道交通装备、能源装备等方向招引项目。

Focusing on automobile and key parts, intelligent equipment, rail transit equipment, energy equipment, etc.



电子信息 Electronic Information



招引方向 | Orientation

重点围绕新型显示、汽车电子、智能终端及零配件制造、新一代半导体材料及设备、信息安全、晶圆制造、封装测试、新型电子元器件等方向招引项目。

Focusing on new display, automotive electronics, smart terminal and parts manufacturing, new generation semiconductor materials and equipment, information security, wafer manufacturing, packaging testing, new electronic components and other directions.



甜味+



装备+



电子信息



先进材料 Advanced Materials



招引方向 | Orientation

重点围绕先进化工材料、金属材料、无机非金属材料、高性能纤维及复合材料、新型建材等方向招引项目。

Focusing on advanced chemical materials, metal materials, inorganic non-metallic materials, high-performance fiber and composite materials, and new building materials.



现代物流 Modern Logistics



招引方向 | Orientation

重点围绕交通运输、商贸流通、国际贸易企业及“公铁水空”领域国内外知名物流企业招引项目。

Focusing on projects of well-known international and domestic logistics enterprises in the field of transportation, trade and circulation, international trade enterprises and "expressway, railway, water carriage and air transport".



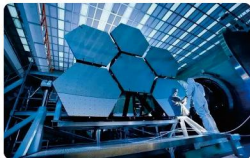
生物医药 Biomedicine



招引方向 | Orientation

重点围绕原料药、化学制剂、现代中药、兽药、生物制品、医疗器械、中医大健康等方向招引项目。

Focusing on raw materials, chemical preparations, modern Chinese medicine, veterinary medicine, biological products, medical devices, Chinese medicine and health.



先进材料



现代物流



生物医药



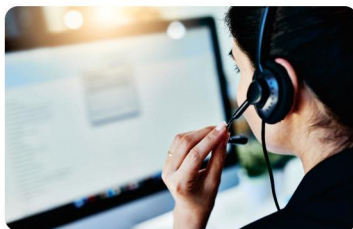
服务外包 Service Outsourcing



招引方向 | Orientation

围绕软件及服务外包产业及大数据、区块链、云计算、物联网、工业互联网、人工智能、虚拟现实、增强现实等方向招引项目。

Focusing on new display, automotive electronics, smart terminal and parts manufacturing, new generation semiconductor materials and equipment, information security, wafer manufacturing, packaging testing, new electronic components, etc.



现代农业 Modern Agriculture



招引方向 | Orientation

重点围绕优质粮油、特色经作、生态养殖(肉牛羊、特色水产等)、设施农业、创意农业、乡村旅游、现代种业、农业装备、农产品烘干冷藏、深加工和销售等方向招引项目。

Focusing on high-quality grain and oil, special economic farming, ecological breeding (beef cattle, sheep, special aquatic products, etc.), facility agriculture, creative agriculture, rural tourism, modern seed industry, agricultural equipment, drying and cooling of agricultural products, deep processing and sales.



05 承接平台

The Platform of Undertaking



国家级内江经济技术开发区 National-level Neijiang Economic and Technological Development Zone

区域面积98.8平方公里，人口约25.5万，正着力建设“川渝领先、西部示范、全国50强”国家级开发区。

With an area of 98.8 km² and a population of about 255,000, Neijiang Economic and Technological Development Zone is making tremendous efforts to develop it as a leading industrial park in Sichuan and Chongqing, a demonstration zone in West China and a top 50 in China.

重点产业 Main Industry

重点构建形成电子信息、装备制造、食品医药、能源材料及现代服务业“4+1”现代化产业体系。

It focuses on the development of the “4+1” modern industrial system covering electronic information, equipment manufacturing, food and biomedicine, energy materials and modern service industry.



内江国家高新技术产业开发区 National-level Neijiang High-Tech Industry Development Zone

总面积211平方公里，核心区51平方公里，按照“一区五园”（高桥园区、白马园区、隆昌园区、资中园区、威远园区）规划布局。

With a total area of 211 km² and a core area of 51 km², Neijiang High-Tech Industry Development Zone is planned to consist of one zone and five parks (Gaoqiao Park, Baima Park, Longchang Park, Zizhong Park and Weiyuan Park).

重点产业 Main Industry

重点发展数字经济、电子信息、智能制造等产业。

Focusing on developing industries of digital economy, electronic information, intelligent manufacturing and etc.





威远经济开发区 Weiyuan Economic Development Zone

按照“一区三园”（威远页岩气综合利用化工园区、严陵园区、镇西食品集中发展区）规划布局，实际管辖面积15.2平方公里，正着力打造“钒钛+”“页岩气+”两个千亿级产业集群。

It is planned in accordance with the rule of one zone and three industrial parks (Weiyuan Shale Gas Comprehensive Utilization Chemical Industry Park, Yanling Industrial Park, Zhenxi Food Concentrated Development Park), with the actual jurisdiction of 15.2 km². It aims to develop vanadium-related industry and shale gas-related industry to a 100-billion-level industrial clusters respectively.

⑦ 重点产业 Main Industry

重点发展先进材料、绿色能源等产业。

Focusing on developing industries of advanced materials, green energy, etc.



资中经济开发区 Zizhong Economic Development Zone

总规划面积6.34平方公里，规划工业用地3.47平方公里，建成标准厂房18栋，面积16.5万平方米。

Zizhong Economic Development Zone has a planned area of 6.34 km² and 3.47km² industrial land, with 18 standard factory buildings completed and a total construction area reaching 165,000m².

⑦ 重点产业 Main Industry

重点发展装备制造、电子信息、新型材料、食品饮料四大主导产业，配套发展绿色能源、轻工纺织等特色产业。

Focusing on developing four leading industries of equipment manufacturing, electronic information, new materials, food and beverage, and developing specialty industries of green energy, light textile, etc.





内江东兴经济开发区 Neijiang Dongxing Economic Development Zone

省级新型工业化产业示范基地，规划面积12.68平方公里。按照“一主一特”加快产业规划布局。

It is a provincial demonstration base of new industrialization industry with a planned area of 12.68 km². This zone is composed of one main industry and one speciality industry, namely new energy industry and the comprehensive use of energy industry.

重点产业 Main Industry

重点发展先进材料、装备制造、资源综合利用、服务外包、“甜味+”等产业。

Focusing on developing advanced materials, equipment manufacturing, comprehensive utilization of resources, service outsourcing and sweet-related industry, etc.



内江绿色能源产业园（市中区） Neijiang Green Energy Industrial Park (Shizhong District)

总规划面积5.3平方公里，现有可用二类工业用地约0.33平方公里，定制化、标准化厂房8.1万平方米。

With a planned area of 5.3 km², there are 0.33 km² second class industrial land and tailor-made standard factory reaching an area of 81,000 m² currently.

重点产业 Main Industry

重点发展表面处理、装备制造、清洁能源、先进材料、电子信息等产业。

Focusing on developing industries of surface treatment, equipment manufacturing, clean energy, advanced material and electronic information, etc.



内江国家农业科技园区 National-level Neijiang Agricultural Science and Technology Park

已建成核心区10.6平方公里，辐射面积超666平方公里，是集“国家农业科技园、国家现代农业产业园、国家农村产业融合发展示范园”三张“国字号”名片为一体的国家级园区，有国家地理标志保护产品12个。

This park has built a core area of 10.6 km² and the radiation area exceeds 666 km². It is a state-level park integrating three national business cards, namely *National Agricultural Science and Technology Park*, *National Modern Agricultural Industrial Park* and *National Rural Industry Integration Development Demonstration Park*. It has 12 national geographic indication protection products.

重点产业 Main Industry

重点发展现代农业、智慧农业、数字农业。

Focusing on industries of modern agriculture, smart agriculture and digital agriculture.





内江荣昌现代农业高新技术产业示范区

Neijiang Rongchang Modern Agricultural High-Tech Industry Demonstration Zone

按“一城两园多基地”布局，规划面积23.87平方公里，目前可用工业用地1.89平方公里。

According to the layout of "one city, two parks and many bases", it is planned to occupy an area of 23.87km². At present, 1.89km² of industrial land has been built.

重点产业 Main Industry

重点发展装备制造、玻璃陶瓷、食品饮料、新能源、新材料等产业。

Focusing on development of equipment manufacturing, glass bottle ceramics, food and beverage, new energy, new materials, etc.



内江软件与信息技术服务外包产业园

Neijiang Software and Information Technology Service Outsourcing Industrial Park

总占地面积1000亩，计划投资100亿元，分四期建成，建成后总建筑面积达140万平方米。目前，一期占地215亩，建筑面积32.3万平方米，已于2024年3月建成并投入运营。

It covers a total area of 1000mu (about 666,666m²) with a planned investment of 10 billion yuan. It is planned to be constructed in four phases with a total construction area of 1.4 million m². At present, the first phase covers an area of 215mu(143,333m²), with a construction area of 323,000m², and has been completed and put into operation in March 2024.

重点产业 Main Industry

重点发展呼叫中心、金融后台、互联网营销推广、数据服务、远程服务、软件开发等产业。

Focusing on developing industries of call center, financial back office, internet marketing promotion, data services, remote services, software development, etc.





内江电子信息产业园 Neijiang Electronic Information Industrial Park

规划面积4.43平方公里，已形成承载能力0.8平方公里，已建成标准厂房超14万平方米，正全力打造成渝经济区电子信息产业配套基地。

The planned area of the park is 4.43 km². Bearing capacity of more than 0.8 km² has been formed and 140,000m² of standard factory have been built. It aims to build a supporting base for electronic information industry in Chengdu-Chongqing Economic Zone.

重点产业 Main Industry

重点发展封装测试、集成电路、半导体、电子元器件等新一代电子信息产业。

Focusing on developing new generation electronic information industry, such as package test, integrated circuit, semiconductors, electronic components.



四川—东南亚产业合作园区 Sichuan-Southeast Asia Industrial Cooperation Park

四川—东南亚产业合作园区位于内江经济技术开发区，规划面积3.7平方公里，是全省首个面向东南亚的产业合作园区。

With a planned area of 3.7km², Sichuan-southeast Asia Industrial Cooperation Park is located in Neijiang Economic and Technological Development Zone. It is the first industrial cooperation park which is oriented to Southeast Asia in Sichuan Province.

重点产业 Main Industry

重点发展电子信息、食品饮料、生物医药、机械装备、现代物流等主导产业。

Focusing on the development of electronic information, food and beverage, biomedicine, mechanical equipment, modern logistics industry, etc.



内江国际物流港 Neijiang International Logistics Port

总体规划面积约26平方公里，成渝发展主轴首个保税物流中心——内江保税物流中心（B型）获批并封关运行。常态化开行陆海新通道国际班列及跨境公路班车，打造中国(内江)—东盟物流贸易对接基地。

The overall planning area of Neijiang International Logistics Port is about 26km². The first bonded logistics center of Chengdu-Chongqing Development Axis—Neijiang Bonded Logistics Center (Type B) was approved and operated under customs control. The New Land-sea Corridor international trains and cross-border highway buses have been launched in a regular manner. It aims to build it as a China (Neijiang) - ASEAN Logistics Trade Matchingmaking Base.

重点产业 Main Industry

重点发展铁路物流和多式联运、公路物流和仓储物流、保税物流和跨境电商、供应链以及物流配套服务等产业。

Focusing on development of railway logistics and multimodal transport, road logistics and warehousing logistics, bonded logistics and cross-border e-commerce, supply chain and logistics supporting services.

部分入驻企业 Some Settled Enterprises



06 成本优势 Low Cost

物流成本表
Logistics Cost Table

江海联运/铁海联运集装箱离境运费 Container Departure of River-Sea Combined Transport/Rail-Sea Combined Transport					
出发地 Place of Departure	港口 Port	目的地 Destination	时间(天) Time (Day)	总里程 Total Mileage	离境运价(元) Departure Freight Rate (CNY)
内江 Neijiang	泸州港 Luzhou Port	上海 Shanghai	15	2693	5000
内江 Neijiang	重庆港 Chongqing Port	上海 Shanghai	12	2549	5500
内江 Neijiang	宜宾港 Yibin Port	上海 Shanghai	18	2823	6000
内江 Neijiang	钦州港 Qinzhou Port	上海 Shanghai	6	1740	4500

国际班列集装箱运费 Container Freight of International Train					
出发地 Place of Departure	目的地 Destination	时间(天) Time (Day)	总里程 Total Mileage	总运价(元) Total Freight Rate(CNY)	备注 Remarks
内江 Neijiang	万象 Vientiane	8	1921	随行市价	经磨憨出境 Exit through Mohan
内江 Neijiang	莫斯科 Moscow	12	7606		经阿拉山口出境 Exit through Alashan Pass
内江 Neijiang	马拉舍维奇 Molashевич	14	9251		经阿拉山口出境 Exit through Alashan Pass
内江 Neijiang	罗兹 odz	15	9558		经阿拉山口出境 Exit through Alashan Pass

注：以40HQ集装箱计算；运价随市场有所波动；运行时间根据口岸情况可能变化。

Note: Calculated by 40HQ container; the freight rate fluctuates with the market; the operation time may vary according to the port conditions.

劳动力成本表
Labor Cast Table

城市 City	内江(元/月) Neijiang (CNY/Month)	重庆(元/月) Chongqing (CNY/Month)	杭州(元/月) Hangzhou (CNY/Month)	厦门(元/月) Xiamen (CNY/Month)	苏州(元/月) Suzhou (CNY/Month)
工资 Wages					
最低工资标准 Minimum Wage Standard	1970	2000	2260	2030	2280

投资内江 甜蜜回报



请使用微信扫码



请使用抖音扫码



请使用微信扫码

内江市经济合作局

Tel: 0832-2050470

E-mail: investnj@126.com

内江市东兴区东桐路1124号（原内江师范学院行政楼右侧）
No.1124 Dongtong Road,Dongxing District,Neijiang